

Highlights

A Monthly Publication of Mt. Olive Lutheran Church - LCMS

February 2010

Lent begins February 17th

A Word from the Pastor:

Testifying to the Uniqueness of Christianity

This past month saw a rather interesting event. A national commentator, Brit Hume, was asked his opinion about Tiger Woods and whether he could recover from his recent marital infidelities on a news show. Brit gave his advice to Tiger. Brit suggested that he could indeed recover, but he should consider the Christian faith and the forgiveness and reconciliation that are provided there.

It was amazing the amount of both scorn and shock that many people expressed. But it was also amazing what kind of support and encouragement that was also expressed. Here are just a few on-line links:

- The original statement and some further comments can be viewed at
<http://www.youtube.com/watch?v=gteKuPgLy8I>
- Ann Coulter commented about it in a column.
<http://anncoulter.com/cgi-local/article.cgi?article=349>
- World Magazine commented about it at
<http://online.worldmag.com/2010/01/04/brit-humes-advice-for-tiger-woods/>
- The get religion blog included several posts including
<http://www.getreligion.org/?p=23984> and
<http://www.getreligion.org/?p=24284>
- Issues, Etc., one of my favorite podcasts, included a segment.
<http://issuesetc.org/?p=2245>



Pastor's Message
for Lent

Many Christian commentators make a point that it is nice to see a discussion of faith in the public. I think it is *particularly* encouraging for the public to see the distinctiveness of Christianity from other faiths. This is, I think, what made most of those who were upset about the comments so angry.

After all, most people think, aren't all religions the same? Don't they all lead to the same place? Don't they all teach the same things? Well, when it comes to the Law, what we should do and not do, we can see a lot of similarity, though even here there are significant differences between religions.

But the heart of the Christian faith is NOT what we are to do or not do. The heart of the Christian faith is the Gospel, what GOD has done for us in the person of Jesus Christ. The heart of the Christian faith is in its forgiveness and redemption. That is precisely what Brit Hume was trying to point out with his comments. And it is what we also should share with others.

In 1 Peter 3:15, Peter instructs us to "always [be] prepared to make a defense to anyone who asks you for a reason for the hope that is in you; yet do it with gentleness and respect." Those are good words for us. And I would say that Brit Hume did a good job.

Someone incredulously asked Brit Hume, "What were you thinking when you made those comments?" Brit's response was priceless: "I was kind of hoping that Tiger would hear them and take them to heart." May our words likewise be received and heard.

Blessings this month as we head into the season of Lent,

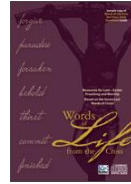
Robert C Franck

Pastor Rob Franck



Lenten services:

This year, our Wednesday evening services will focus on the seven words of Christ from the cross, words of life, we might say, for they come from Christ the Author of life.



Ash Wednesday February 17	The Faithful Word: "My God, My God, why have you forsaken me?"
February 24	The Pardoning Word: "Father, forgive them, for they know not what they do."
March 3	The Promising Word: "Truly, I say to you, today you will be with me in paradise."
March 10	The Dying Word: "Father, into Your hands I commit My spirit."
March 17	The Compassionate Word: "Woman, behold your son! ... Behold your mother!"
March 24	The Suffering Word: "I thirst."
Good Friday April 2	The Fulfilled Word: "It is Finished."

Again this year we will have not only our own Pastor leading these services, but we will also hear Rev. John Wurst from the Lutheran Church of Christ the King and Rev. David Schoessow from Christ Lutheran Church in Superior.



Do you have a great tasting soup recipe? Why not make a batch and share it at a soup supper during Lent. **Our soup suppers** begin on February 17th with the Ash Wednesday service. There are seven chances to serve a soup supper. Find a friend or group and sign up to serve supper. A sign-up sheet is posted on the upper room door. You will

need to make soup and a dessert. All the bread, crackers, cheese, peanut butter, and jelly will be provided. **Hurry** and get your name on the list before the chances are gone!!!

Soup Supper Volunteers:

- February 17th (Ash Wednesday) –
- February 24th - Rebecca Circle
- March 3rd -
- March 10th - Jake and Kaye Tanttari
- March 24th -
- April 2nd (Maundy Thursday) –



From the Church Office



“This is the day the Lord has made, let us be glad and rejoice in it.”

Psalm 118:24

Happy Ground Hog's Day !!! ... Happy Valentine's Day !!!
Happy Presidents' Day !!! ... Happy Snow and Cold !!!

Do you remember counting the days in each month until something special was going to happen? Each month would have its own special holiday - or so it seems. If it wasn't on the calendar, it was someone's birthday or other significant family event. And, yes...“happy snow and cold”. You really do have to have an optimistic attitude when you live “up north” in cold country!

The church year brings its own special events - now we look forward to Lent and all that it means as we prepare for Easter. What a glorious anticipation!!

Thanks to everyone who got their Annual Reports in so quickly. The Annual Reports will be finished and in your mailboxes soon. Please check your mailboxes. Your 2010 offering envelopes and 2009 year-end giving statements are some of the items remaining in your boxes now. February's also a very short month and we'll be looking at another newsletter deadline all too quickly. Thank you for getting your requests and articles to me in a timely matter.

God Bless you!

Connie



Annual Report
Deadline
February 4th
Thank you !!

Ever wonder..... ?

Meaning and use of the LCMS Logo Cross

Introduced in 1984, the LCMS logo cross features three crosses in one. It declares that “we worship one God in Trinity and Trinity in Unity.” The open arms point upward toward God in prayer and openly receive God's grace. The lower arms point down, as if open to embrace the world with God's love. The 12 individual parts of the logo cross remind us of the 12 tribes of Israel and the 12 apostles. The four arms appear to be in motion, as we urgently tell the world what God's love in Jesus Christ means to us, and uniquely, as Missouri Synod Lutherans.



The cross logo is a registered trademark of The Lutheran church—Missouri Synod and must be used in conformance with the specifications set forth in the Graphic Standards Manual at www.lcms.org/?11222.

Our Stewardship Response

		Average Sunday Attendance	Total Baptized Members	% Attended	
Worship Services – December 2009		89.75	311	28.8%	
	Applicable Offerings Received	Required for Budget	Under/Over Budget	Operating Fund Balance	Change in Operating Fund Balance
	\$12,755	\$14,432	(\$1,677)	\$18,000*	(\$10,162)/month
Year-to-date	\$178,601	\$187,611	(\$9,010)		\$6,236YTD
	Memorials	Remodeling Fund	Family Assistance	Total Dedicated Funds	Total Funds 12/31/09
Fund Balances	\$638	\$7,376	\$6,594	\$57,015	\$75,015

Highlights

- December was a four Sunday month.
- Mortgage Fund Balance as of December 31,2009 is \$93,298
- Extra funds for mortgage collected in December was \$1,809 and (\$11,982 YTD)
- Note that there were blizzard-like conditions on several weekends, thus reducing the attendance statistics significantly.

* Year-end transfers were made that reduced the operating fund balance to \$18,000 as directed by the Board of Elders. These transactions also increase the Operating Fund expenses in December.

- A Transfer \$1,668.75 from Program-Campus Ministry to the dedicated fund Local Campus Ministry. This amount represents the overage in the amount received from District and the amount spent on the Campus Ministry.
- B Transfer \$5,235.54 from Operations-Maintenance and Repair to the dedicated fund Capital Improvement for expenditure in 2010 as directed by the voters. This amount represents the operating funds over \$18,000.

If you are interested in more detailed information, complete Financial Secretary's and Treasurer's Reports are posted on the bulletin board in the Upper Room.

Please use your envelopes because this also saves time for the counters. If envelopes are not used the counters must look up the number and add a note for the financial secretary and the treasurer with their name, number, date and amount for the records. If you forget your envelopes just put you envelope number on your check. Thanks, Jim

Relief for Victims of the



Earthquake in Haiti

Here are links to opportunities for response to the Haiti Earthquake Disaster:

[Announcement: Thrivent Financial to supplement Lutheran gifts for Haiti](#)

LCMS President Dr. Gerald B. Kieschnick spreads news of Thrivent Financial for Lutherans' decision to match members' gifts to Lutheran disaster relief agencies for Haiti aid.

[LCMS World Relief and Human Care responds in Haiti with emergency funds after devastating earthquake](#)

As news of what is being called the largest earthquake to hit Haiti in more than 200 years reached LCMS World Relief and Human Care (LCMS WR-HC) on Tuesday, the Synod's mercy arm began preparing to reach out in the Caribbean nation with much needed assistance and working in cooperation with Lutheran partners.

[Material Donations Needed for Haiti Relief – LCMS WR/HC](#)

Material donations are requested **within the next two weeks** by LCMS partners for shipment to Haiti in response to Jan. 12 massive earthquake. Two 40-foot shipping containers will be loaded with donated supplies and shipped to an intact Port-au-Prince depot, to arrive within three weeks of the earthquake.

Financial donations are also urgently required for the long-term Lutheran response in Haiti. To make a gift, call toll-free 888-930-4438, or mail checks marked "Haiti Earthquake Relief" to LCMS World Relief and Human Care, P.O. Box 66861, St. Louis, MO 63166-6861.

[Lutheran World Relief Health Kits, Layettes Enroute to Haiti; More Quilts and Kits Needed](#)

Lutheran congregations and groups in the U.S. assemble the kits and donate them to LWR for use in overseas emergencies.

"Right now our stocks are running low, and we are critically low on health kits," said Knoblich. "We know from experience that Lutherans are compassionate people, and we are asking that they donate whatever quilts and kits they can to help us meet the incredible needs in Haiti."

Michelle Ritchie, trained disaster relief worker (member of the MNN/MNS Disaster Team) and wife of Rev. Andrew Ritchie, Hosanna, Mankato, MN, left for Haiti on Tuesday as part of the **LCMS Disaster Team** headed up by Glen Merritt. She will be helping those who are injured and recovering the bodies of those who died during the earthquake. She also has been scheduled for at a second trip that will be two weeks in length. Your prayers for Michelle and her family are appreciated.



The special offering taken on Sunday (January 17th) to support the orphanage project damaged in the earthquake in Haiti resulted in a total of \$2,119.28. Thank you for your generous support !!

Reserved for calendar

Reserved for calendar

ACT Corner:

The ACT will serve the coffee fellowship following the services on Sunday, February 7th and hold their meeting as well. Final plans for the Dessert Theatre on February 20th are in the works.

Note: Last year's Dessert Theatre was a "hit" and this year's event promises more of the same! Be watching for more details!!

What: Dessert Theatre
When: February 20th, 7:00 p.m.
Where: Mt. Olive Church basement
Who: Anyone 0 - 969!

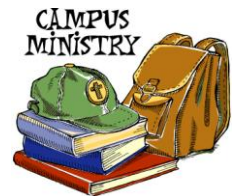


Why: Have FUN, laugh a lot, and raise funds for the youth group to aid in Act activities. There will be no cost to attend the Dessert Theatre, but free-will donations will be gladly accepted.

Needed: No "real" talent required. If you sing opera in the shower, if you can wiggle your ears, you have just the kind of talent (or UNTalent) we're looking for! Please sign up with Robin Muench after church on Sundays. Also, we will be needing lots of card tables. If you have one or more we could borrow, please bring it/them to the church from now through Saturday, February 20th. Please label each table clearly with your name and phone number. If you need the table(s) picked up from your home, please call Connie at the church office, 724-2500, and arrangements will be made. Thank you!

Campus Ministry Highlights:

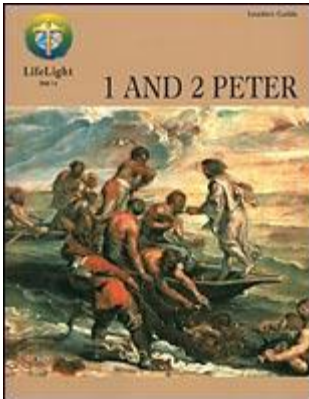
Everyone of Lutheran Student Fellowship is back from Christmas break and ready to study! We are meeting every Monday night at 7:00 in the basement of Luther House. We are excited for spring semester and the opportunity to learn more about the Lord.



Tyson

Spring Choir Opportunity –

Did you enjoy the choir's performance during the Christmas services? Did you want to join right in and sing with them? You have another opportunity for the Easter services. Practices will begin on Wednesday, February 10th, at 7:00 p.m. Then on Ash Wednesday, February 17th beginning at 7:30 p.m. So – come for the soup suppers at 5:00 p.m., stay after the Lenten worship services, “polish” up your singing voice and come and join the choir for this limited opportunity. Rehearsals will continue through the Lenten preparation for Easter.



New Life Light Bible Study Begins February 7th

Beginning on February 7th, we will be starting a new LifeLight Bible study on the books of 1 & 2 Peter. Consider joining our Sunday evening Bible study - it is a great way to grow in your faith and to get to know other members in our congregation. The LifeLight books are available in the narthex.

LifeLight will be meeting at 3:00 p.m. on Sunday, February 7th (to accommodate our football fans) – then will resume meeting at 6:30 p.m. on Sundays.

If interested, take a study guide, sign your name to the list and come to the first session prepared to discuss Session 1. The cost of the study guide is \$8.50 (checks can be put in the offering plate; note on the check that it is for the LifeLight study guide). See Pastor Franck or Carol Walczak with any questions.

Circle News:

The February schedule is as follows:

- **Priscilla Circle** will meet on Monday, February 1st at 4:30 p.m.
- **Sarah Circle** will meet on Wednesday, February 3rd at 6:30 p.m.
- **Evening Quilting** will meet on Tuesday, February 9th at 6:00 p.m.
- **Hannah Circle** will meet on Wednesday, February 10th at 9:30 a.m.
Thank you for the donations for the Mitten Tree for the Kids' Closet.



“Dear Friends in Hannah’s Circle,

Thank you so much for the beautiful hand knit accessories you made and donated to our program. Did you hear that we ran out of mittens in December? Thanks to many generous donors like you, we are now back in business! What wonderful support we have in this community – we are truly heartened by you all.

Gratefully, Char Kerelko, Coordinator of Kids’ Closet

Check out our website at www.kidsclosetofduluth.org”

- **Quilting** will meet on Wednesday, February 24th at 9:00 a.m.
- **Rebecca Circle** – will serve the soup supper on Wednesday, February 24th and a special dessert in honor of all the musicians in appreciation of their music and dedication.

The **Lydia Circle** will resume again beginning in April. Women of the congregation are encouraged and welcome to join any of the groups. All meetings are at the church unless otherwise indicated. Feel free to call the office for information.

What: An LWML Zone planning meeting for the purpose of planning the Spring Rally.

When: Saturday, February 27, 2010 at 9:30 a.m.

Where: The Lutheran Church of Christ the King
4219 Grand Avenue
Duluth, MN 55807

Who: Two or more members from each society. We hope to see you there!

Ruth Robertz, Secretary, Lake Superior Zone LWML



News from Lutheran Island Camp

www.islandcamp.org

Polar Plunge Weekend!

Join us for our Annual Polar Plunge Weekend! This great youth retreat begins Friday evening and ends Sunday at noon. Included will be pizza, Thumper Pond Water Park, great Bible Study and worship, broom ball, and, of course, the option of a dip in the lake Saturday afternoon.



Date: February 26-28, 2010

Cost: \$89 for the entire weekend; \$40 for all day Saturday; no cost for Plunge alone

Deposit: \$25

Ice Fishing Weekend:



Join us for the first annual Ice Fishing Weekend. We'll provide housing, great meals, Bible Study, devotions and help find the best fishing spots on lakes in the area. Housing will be in our Retreat House and Martha Cabins. This would be a great program for fathers and sons (or daughters). [Go to website to register.](#)

Dates: February 12-14, 2010

Rates: \$89

Deposit: \$25

NEW EVENT-Trailblazer Winter Adventure (ages 8-12)

Take 30 or so kids who've been in school for 6 months; bring them out to camp for a weekend in the middle of February; throw in some of our best and brightest staff members; throw in a foot or two of snow, 18 inches of ice, and some great facilities; mix in a hayride, broomball, Thumper pond, skiing and hiking, a few campfires, hot chocolate, a great Bible Study, moving devotions and worship, and you have Trailblazer Winter Adventure. This year's Adventure is scheduled to begin Friday evening February 12th and will close out Sunday noon on the 14th. The cost is \$89. Some camperships may be available.

Men's Retreat:

Theme "Soldiers of the Cross"

The Sub Themes, include: the Church Militant, Equipped for Battle, Identifying the Camouflaged Enemy, Prisoners of War - Addictions, Missing In Action/Ministering to Wounded Soldiers; The Battle Belongs to the Lord.



The Church on Earth since the very beginning has been in a spiritual war. The schemes of the evil one are subtle and only in Godly knowledge we learn to identify the enemy and his tactics. On earth we are the Church militant and we face persecution and ridicule by the world, our flesh and the devil. However, in Christ and through Word and Sacrament we are given the victory and the hope and power to overcome the world, our flesh and the devil. The means of this victory - the Cross of Christ. This year's Men's Retreat will tackle this challenging topic by equipping the Men who attend to grow deeper in their faith and trust in Christ and His Word.

Join other men in Bible Study, fellowship, recreation, worship, and so much more. A self-serve supper will be available Friday night beginning at 5:00 pm. Other events will include our 3rd Annual Chili cook-off, broomball tournament, cross-country skiing, sing-a-longs, ice fishing and more. Housing will be in the ERC, Retreat House, and Martha cabin. Go to the website to register.

Dates: February 19-21

Rates: \$89; Saturday only \$40.

Deposit: \$25



LSLEA Preschool News

January has gone by quickly; we had 1 new student join us in December and 2 new students in January. The students have been learning about ice, snow and winter.

In February, the students will be making and mailing valentines for shut-ins, if you know of someone who would appreciate receiving a valentine from our preschoolers, please email their name and address to the church office or to the director at director@lakesuperiorlutheranpreschool.org (by February 11th).

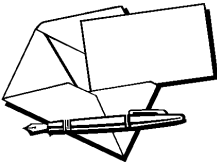
Congregational Meeting and Potluck March 14th



Join us March 14th after the church service for an informational meeting and potluck of the congregation. First and foremost on the agenda is deciding what improvements to the church the congregation would like to see in 2010. The Elders will present several options and their costs with the congregation making the final decision as to what will get done.

We will also hear the 2010 agendas of the Outreach Committee and the ACT, as well as the Elders. This meeting will be an opportunity for the congregation to make suggestions and other ideas to each group as to what you would like to see happen here at Mt. Olive. Mt. Olive is your congregation and March 14th is your opportunity to hear and express your wishes for 2010.

Thank You:



“Thank you to Pastor Franck and to everyone for their cards, prayers and visits for both of us since our accident. Both of us are doing well and Earl hopes to be released for Lakeshore in mid-January. Thank you again. God Bless you all.”

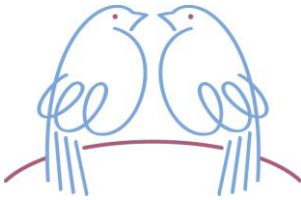
Earl and Marge Moen.”

Nursery Volunteers:

Please consider serving our young families so that parents of young children can participate in a worshipful service by volunteering in our church nursery on Sunday morning. Currently there are only four groups (four families) helping to staff the church nursery during Sunday services. If you are able to help please consider doing so. The more people to draw from mean less of a time commitment each person must make.

Thank you also to those people already serving!!!





February Anniversaries

- 6 Tim & Marianne Jezierski, 28 years
- 11 George & Norma Mousky, 54 years
- 13 Karen & Bryan Brandt, 2 years

February Birthdays

- 2 Gwen Chambers
Steve Linngren
- 3 Lois Mertz
- 5 Sam Anderson
Steve Lasky
- 6 Sara Anderson
- 10 Mabel Schauland
Lisa Shearer
- 11 Jon Farchmin
- 13 Arlene Ruzich
- 15 Barb Wedward
Erinn Rasmusson
- 17 Vi Miller
Kellen Sheedy
- 18 Ashley Taipale
- 19 Barb Sheedy
- 20 Max Plante
- 21 Pat Johnson
Lonnie Lassman
- 22 John Stephenson
- 25 Frank Mertz
- 26 Ardell Teige
- 27 Millie Bucholz
- 28 Tina Graupman
- 29 Dave Warren



Winter Birthdays

