



National Translators Learning about Translation Editor

UPDATE

from the SHANEYFELTS

Jon
Carol
Sarah
Steven
Stephanie

Fall 2007

We Have Moved!

God has provided for our every need as we have moved to Waxhaw. Thank you for keeping us in your prayers. Please note our new address:

**7706 Davis Rd.
Waxhaw, NC 28173**

Carol will be taking care of our partner communications. You may email us at:

carol_shaneyfelt@sil.org
(Jon's email address is now for office use.)

Our new telephone number is:
(704) 243-7576



The moving truck from JAARS arrives in Tennessee

Going to Work

Now that we have arrived to begin our assignment at the JAARS center, we felt it would be helpful for us to show you where Jon will be working. Within a large room at the Language Services Center, Jon and other members of the team are working on Translation Editor, a Scripture editor that will handle any script that exists in the world today. These scripts do not look anything like our alphabet, and they flow in directions other than left to right. No commercial text editor is available to handle these minority languages so that Scripture in these languages can be printed. Presently, thousands of languages still have no Scripture translation started. Providing the right tools to translators will help to bring the Gospel of Jesus Christ to those who have never heard or read it for themselves in their own language.



Jon finds a computer waiting for him at the JAARS Language Services Center



Steven goes back for another load as he helps to load the moving truck

Family Matters

Much of our summer was spent in preparing for our move to Waxhaw, NC by packing our belongings into boxes and showing our home. The long-awaited days finally came in August, when the JAARS truck was loaded in Tennessee and then unloaded in North Carolina. The Materials Transport department at JAARS helped to make the move easier and more economical for us, and God helped us find a buyer for our home and we were able to finalize the sale of our home shortly after our move. God is so good all the time!

PRAISES

- For a safe move to JAARS
- For all our partners' answered prayers
- For the opportunity to be involved in Bible translation
- For the sale of our home in Tennessee

PRAYER REQUESTS

- For ongoing support
- That Jon will quickly learn about the details of the programming language being used for Translation Editor
- For Carol and the children as they settle into a new routine and keep up with partner relationships

Your partners in Christ,

The Shaneyfelts

7706 Davis Rd.
Waxhaw, NC 28173
(704) 243-7576
carol_shaneyfelt@sil.org



Lutheran Bible Translators

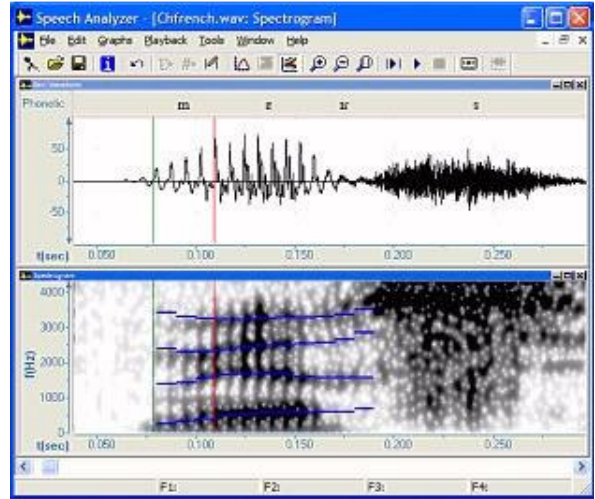
Wycliffe
Partners in Bible Translation



For Partnership Through
Wycliffe Bible Translators
P.O. Box 628200
Orlando, FL 32862
1-800-WYCLIFFE
www.wycliffe.org

(Please enclose a note stating: "for Jon & Carol Shaneyfelt's ministry")

For Partnership Through
Lutheran Bible Translators
P.O. Box 2050
Aurora, IL 60507
1-800-532-4253
www.lbt.org



Here is a snapshot of the new **Speech Analyzer Software** analyzing an utterance.

Update For Techies:
How to get a newer version of the
Speech Analyzer that we have
demonstrated in many
Christian schools:

A newer version than was mentioned in our last newsletter is now **available** at www.sil.org/computing/sa

Faith cometh by hearing, and hearing by the word of God. Romans 10:17